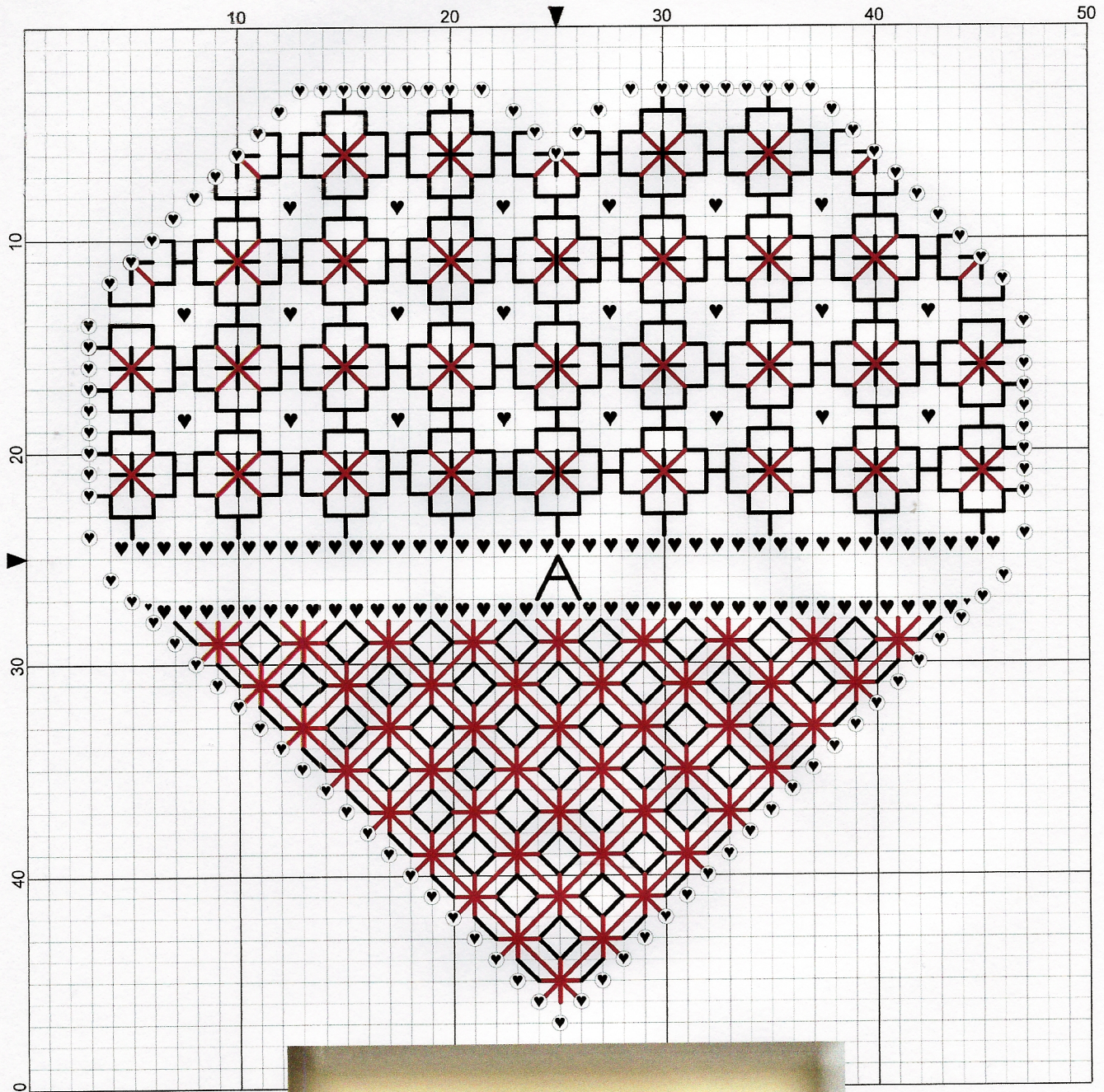


Happy Valentine



Elizabeth Almond



Happy Valentine

Author: Elizabeth Almond
Copyright: Elizabeth Almond
Grid Size: 50W x 50H
Design Area: 3.29" x 3.29" (46 x 46 stitches)

Legend:

■ [2] DMC-815 ANC-44 garnet - md

Backstitch Lines:

— DMC-310 black

— DMC-815 garnet - md

French Knots:

⊙ DMC-815 garnet - md

Happy Valentine

There are two ways of working this pattern, either draw the template onto a piece of 14 count Aida or 28 count evenweave and work the fillers inside the drawn outline or, work the black work pattern first and add the border round the stitched heart using double knot stitch or french knots worked closely together.

For a continuous line of double knot stitch follow the diagram and work the border using THREE threads of stranded cotton. If using french knots use TWO strands and wrap round the needle twice.

Material:

28 count evenweave or 14 count Aida, 7 x 7 inches

Threads:

DMC stranded cotton:

310 Black, one skein

815 Garnet medium, one skein

Ribbon bow or embellishment

Tapestry Needle No.24

Stitches used:

Back stitch, one strand

Cross stitch, two strands

Half cross stitch, two strands

French knots - two strands or,

Double knot stitch - three strands

Method:

Start the design at A working upwards to create the lighter flower filler and downwards to create the darker stitched area. When the embroidered central area has been stitched work the outside line using either double knot stitch or french knots.

Stitch the embellishment on using the picture as a guide.

I hope you enjoy working this design as much as I have enjoyed creating it. If you have any queries please contact:

lizalmond@blackworkjourney.co.uk



Heart can be made larger or smaller.
Work the design in the same way.



Double knot stitch